

Location Plan
scale 1:500

notes

This drawing is the copyright and property of AKS Architects and Engineers Ltd. It must not be copied or published without written consent. Do not scale from this drawing.

All dimensions to be checked on site.

LEGEND:

1. Existing internal fixed window frame with fixed Georgian wire or fire resistant glass panels to remain.
2. all internal doors to be 2100 high from FFL if noted otherwise.
3. all internal doors to be 2100mm high from FFL and are to incorporate the following:
FD30
self closer
wire mesh glazing panel
fire rated (800°) steel hinges, min 3
intumescent strips, if required
4. all internal walls to METSEC detailing, 12.5mm plasterboard both faces with mineral wool insulation internally.
5. All main METSEC fire resistance walls to achieve a 1 hour fire rating lining board.
6. Extg. masonry wall to remain.
7. Existing Metsec wall / structure to remain.
8. Existing rear window to be altered to provide new fire escape door within frame.
9. Existing rear fire escape door to remain.
10. Proposed high level windows top hung inward opening, colour to match existing, clear glazing.
11. New floor with METSEC steel joists, lined to the underside with 1 hour fire rated board, and 19mm plywood decking over prior to laying floor finish.
12. Provide new ceiling cladding to underside of existing and proposed steel frame. All structural members to be lined with 1 hour fire rated cladding.
13. Existing internal walls to remain, make good if necessary and apply 2 coats of emulsion paint.
14. Existing external steel sheet cladding to receive minor alterations due to new window insertions. contractor to cut opening within existing steel members. glazing to be manufactured after completion of opening.
15. steel portal frame to remain, fire rated cladding to be checked for defects and repaired where necessary.
16. Provide new internal METSEC wall partition to outer skin of external cladding, lined with 1 hour fire rated boarding.
17. For floor finishes, please provide carpet tiles to match existing, refer to highlighted/hatched area as per colour below.
18. Existing fire escape steel staircase to remain and new fire rated door introduced.
19. All glazing to be 1100mm high from FFL, with clear glazing, aluminium frame inward opening casement window with integrated fire escape outward opening door. External single door, with vision panel, aluminium frame, weather resistant. Colour to match existing.
20. Existing vinyl flooring to remain and made good, once new LGSF structure is installed.
21. Existing kitchenette to remain.

**TOWN PLANNING AND
BUILDING CONTROL**

31 JAN 2014

RECEIVED

A 01.14 issued to planning

rev	date	description

AKS ARCHITECTS & ENGINEERS
P.O. Box 855, Gibraltar

Tel: (+350) 20073260 Fax: (+350) 20074739
Email: mail@aks.gi

project
Internal Alterations to Housing Works Agency

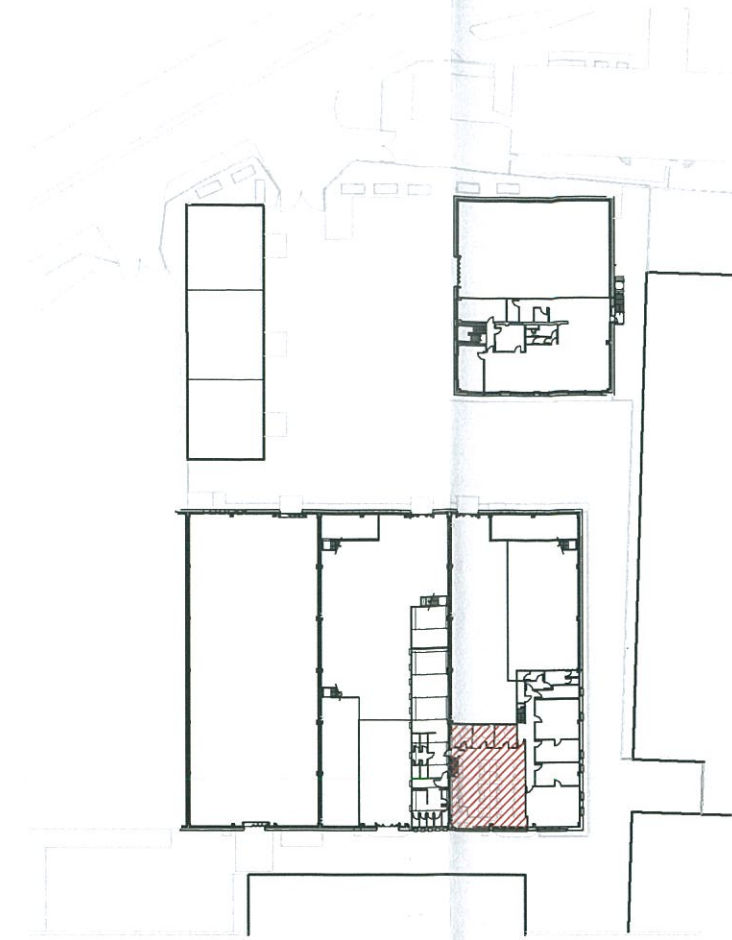
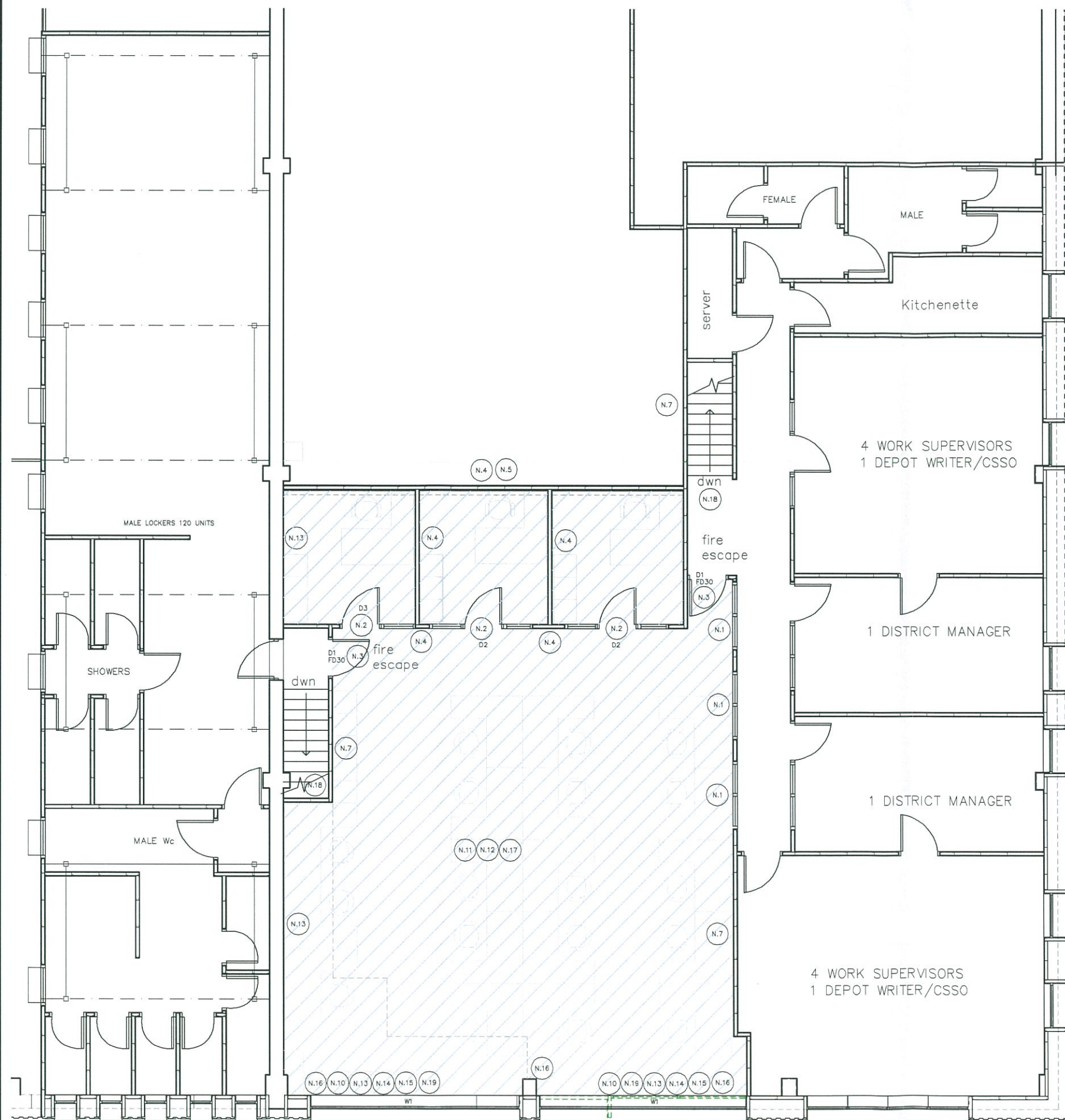
title
Architectural GA:
Ground Floor Layout

scale
1:50@A1 1:100@A3

drw DJR chk DJR

drawing no. rev. date

A214004.100 A 23.01.14



Location Plan
scale 1:500

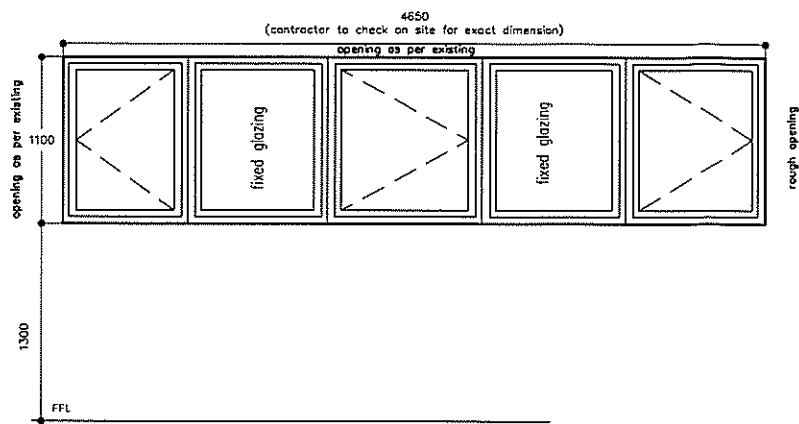
notes
This drawing is the copyright and property of AKS Architects and Engineers Ltd. It must not be copied or published without written consent. Do not scale from this drawing.

All dimensions to be checked on site.

- LEGEND:
- Existing internal fixed window frame with fixed Georgian wire or fire resistant glass panels to remain.
 - all internal doors to be 2100 high from FFL if noted otherwise.
 - all internal doors to be 2100mm high from FFL and are to incorporate the following:
FD30
self closer
wire mesh glazing panel
fire rated (800) steel hinges, min 3 intumescent strips, if required
 - all internal walls to METSEC detailing, 12.5mm plasterboard both faces with mineral wool insulation internally.
 - All main METSEC fire resistance walls to achieve a 1 hour fire rating lining board.
 - Extg. masonry wall to remain.
 - Existing Metsec wall / structure to remain.
 - Existing rear window to be altered to provide new fire escape door within frame.
 - Existing rear fire escape door to remain.
 - Proposed high level windows top hung inward opening, colour to match existing, clear glazing.
 - New floor with METSEC steel joists, lined to the underside with 1 hour fire rated board, and 19mm plywood decking over prior to laying floor finish.
 - Provide new ceiling cladding to underside of existing and proposed steel frame. All structural members to be lined with 1 hour fire rated cladding.
 - Existing internal walls to remain, make good if necessary and apply 2 coats of emulsion paint.
 - Existing external steel sheet cladding to receive minor alterations due to new window insertions. contractor to cut opening within existing steel members, glazing to be manufactured after completion of opening.
 - steel portal frame to remain, fire rated cladding to be checked for defects and repaired where necessary.
 - Provide new internal METSEC wall partition to outer skin of external cladding, lined with 1 hour fire rated boarding.
 - For floor finishes, please provide carpet tiles to match existing, refer to highlighted/hatched area as per colour below.
 - Existing fire escape steel staircase to remain and new fire rated door introduced.
 - All glazing to be 1100mm high from FFL, with clear glazing, aluminium frame inward opening casement window with intergrated fire escape outward opening door. External single door, with vision panel, aluminium frame, weather resistant. Colour to match existing.
 - Existing vinyl flooring to remain and made good, once new LGSF structure is installed.
 - Existing kitchenette to remain.

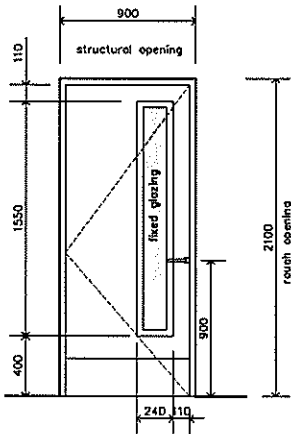
TOWN PLANNING AND
BUILDING CONTROL
31 JAN 2014
RECEIVED

A 01.14 issued to planning		
rev	date	description
AKS ARCHITECTS & ENGINEERS P.O. Box 855, Gibraltar Tel: (+350) 20073260 Fax: (+350) 20074739 Email: mail@aks.gi		
project Internal Alterations to Housing Works Agency		
title Architectural GA: First Floor Layout		
scale 1:50@A1		1:100@A3
drw DJR	chk DJR	
drawing no. A214004.101	rev. A	date 23.01.14

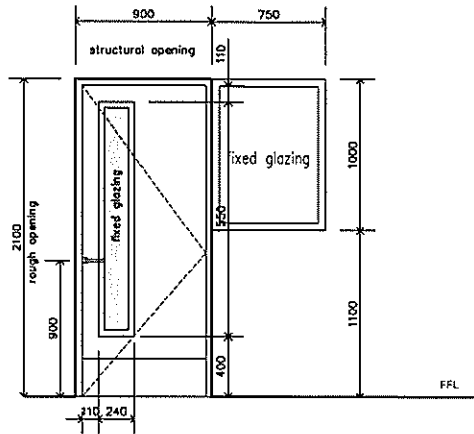


W.1: 2No. New external
Proposed external aluminium single leaf window, inward opening side hung window.

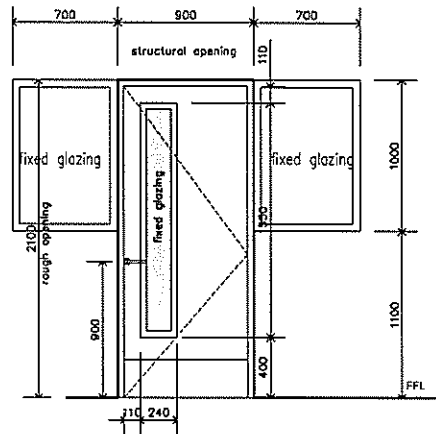
- Note:
- Colour to match existing windows Brown/Grey.
 - Clear glass/single glazing
 - Contractor to check on site structural opening size prior to fabrication.
 - Manufacturer to provide suitable frame section.
 - Manufacturer and reference: Technal or similar approved, all to relevant & current BS. Clauses.
 - Ironmongery/accessories: As supplied by manufacturer.



- D1: FD30
2No.
Note:
- Contractor to check on site structural opening size prior to fabrication.
 - softwood painted
 - internal only
 - vision panel – Georgian wire, single glazes
 - kick plate internal face



- D3: 1No.
Note:
- Contractor to check on site structural opening size prior to fabrication.
 - softwood painted
 - internal only
 - vision panel – Georgian wire, single glazing
 - kick plate internal face

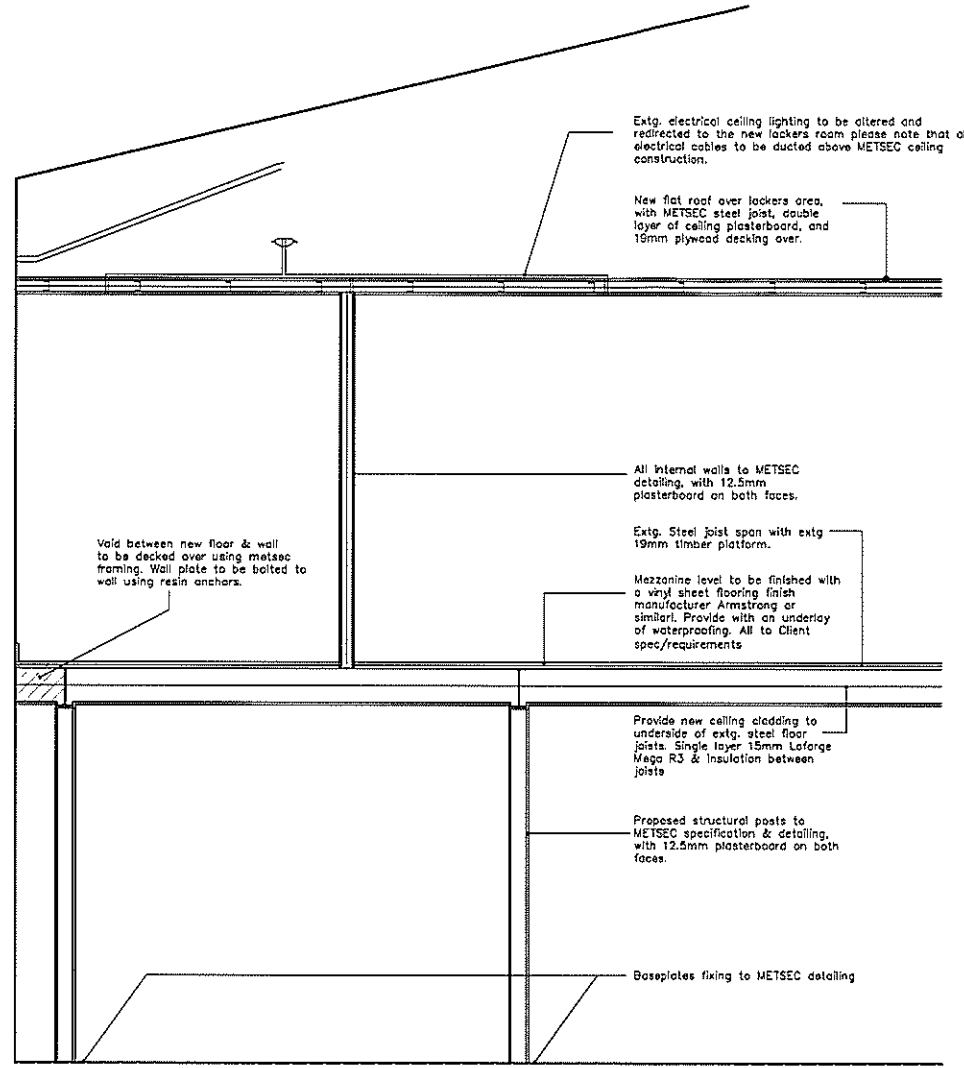


- D2: 2No.
Note:
- Contractor to check on site structural opening size prior to fabrication.
 - softwood painted
 - internal only
 - vision panel – Georgian wire, single glazing
 - kick plate internal face

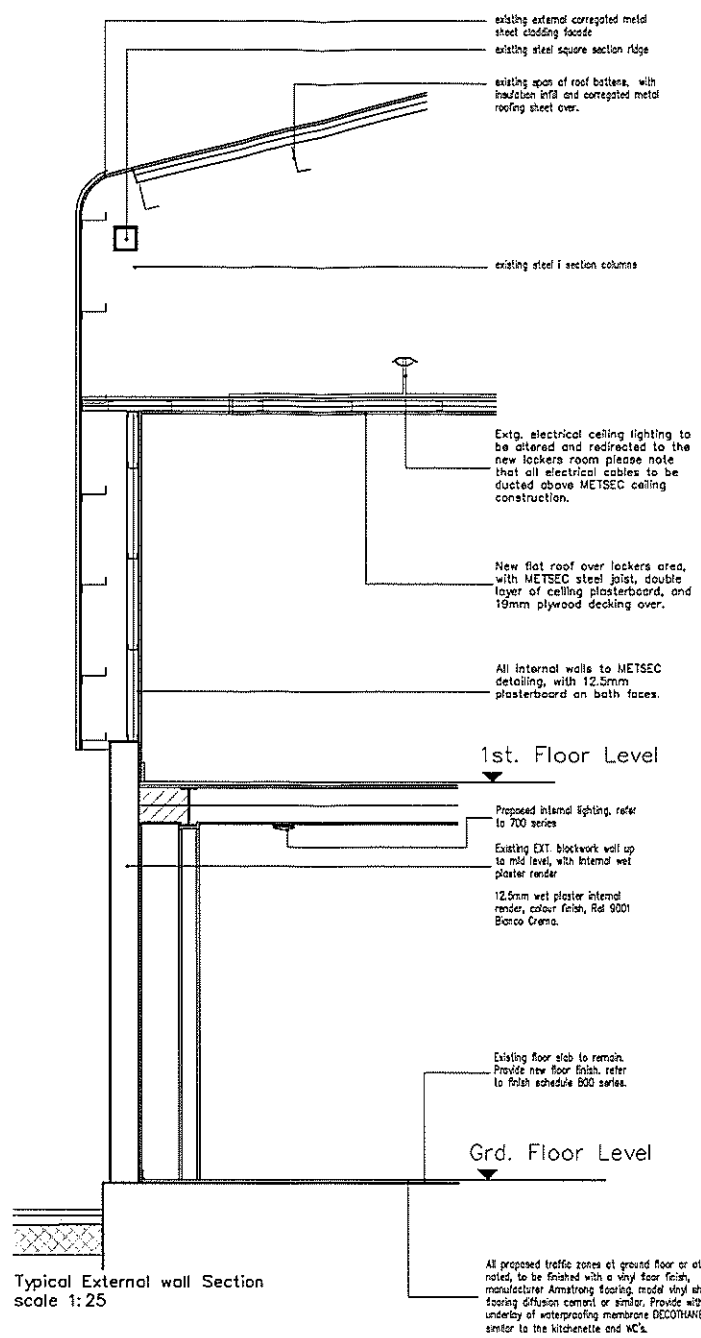
notes
This drawing is the copyright and property of AKS Architects and Engineers Ltd. It must not be copied or published without written consent.
Do not scale from this drawing.
All dimensions to be checked on site.

TOWN PLANNING AND
BUILDING CONTROL
31 JAN 2014
RECEIVED

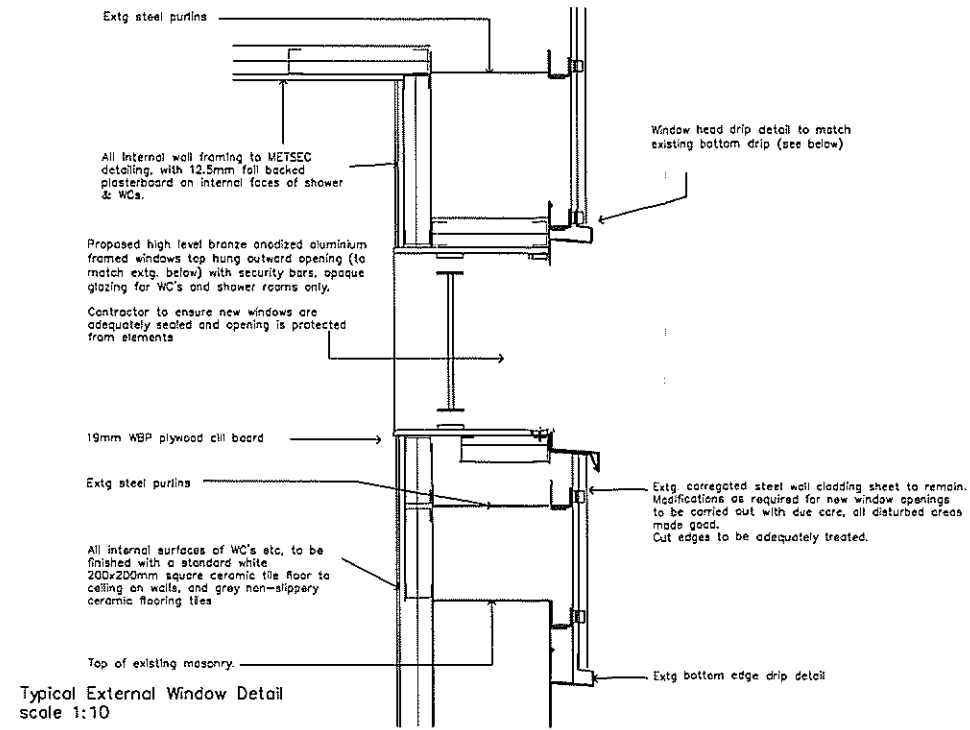
A 01.14 issued to planning		
rev	date	description
AKS ARCHITECTS & ENGINEERS P.O. Box 855, Gibraltar Tel: (+350) 20073260 Fax: (+350) 20074739 Email: mail@aks.gi		
project Internal Alterations to Housing Works Agency		
title Architectural GA: Door & Window Schedule		
scale 1:25@A1		1:50@A3
drw DJR	chk DJR	
drawing no. A214004.102	rev. A	date 23.01.14



Typical Party wall Section
scale 1:25




Typical External wall Section
scale 1:25

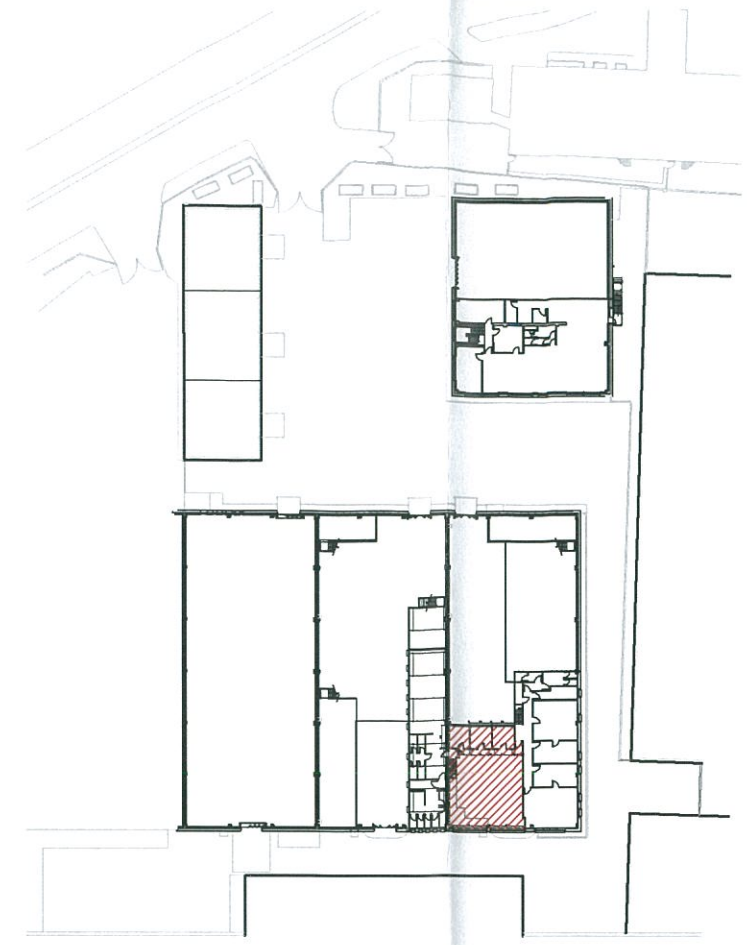
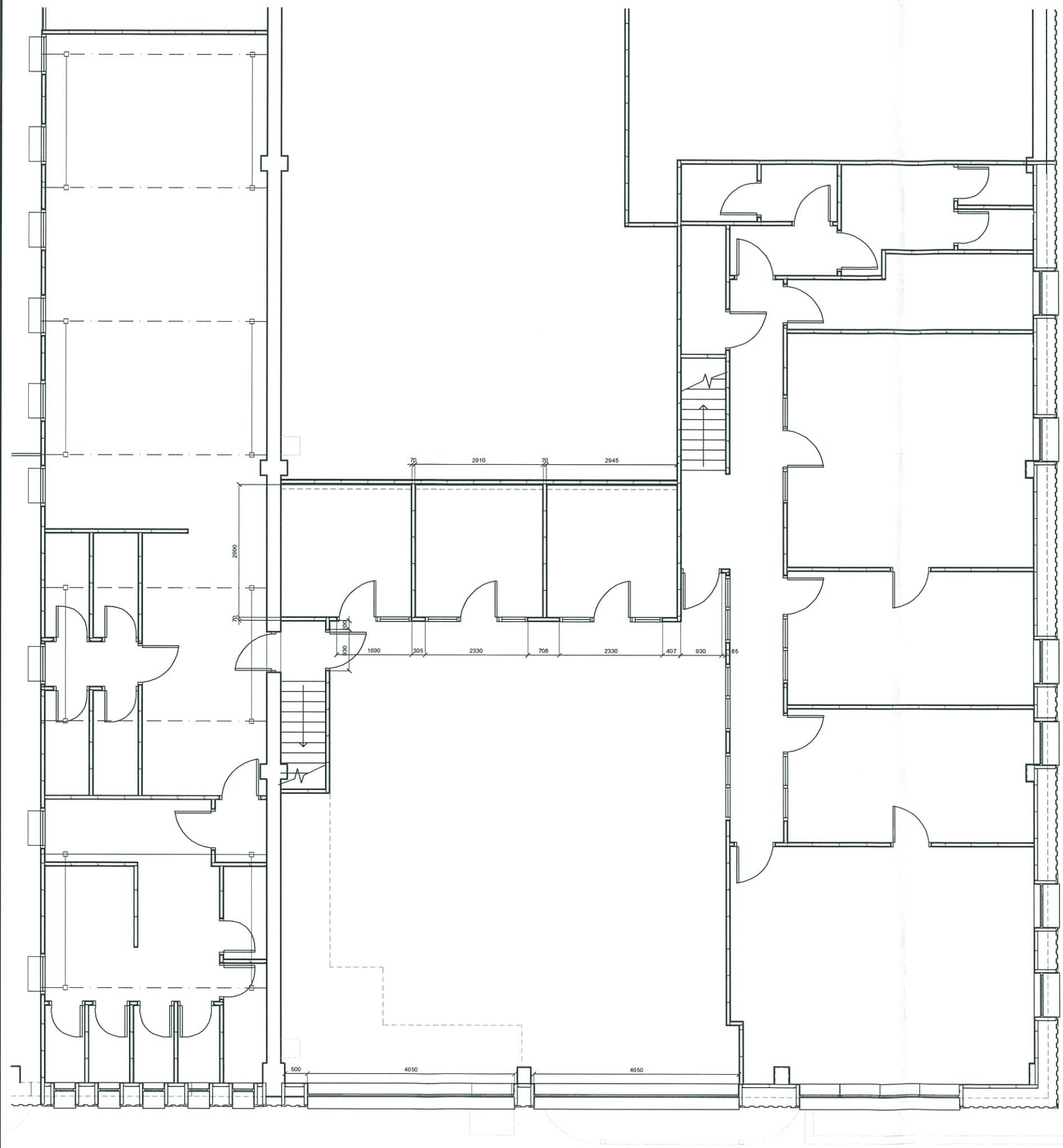


Typical External Window Detail
scale 1:10

notes
This drawing is the copyright and property of AKS Architects and Engineers Ltd. It must not be copied or published without written consent. Do not scale from this drawing.
All dimensions to be checked on site.

TOWN PLANNING AND BUILDING CONTROL
31 JAN 2014
RECEIVED


A 01.14 issued to planning		
rev	date	description
 AKS ARCHITECTS & ENGINEERS P.O. Box 855, Gibraltar Tel: (+350) 20073260 Fax: (+350) 20074739 Email: mail@aks.gi		
project		
Internal Alterations to Housing Works Agency		
title		
Architectural GA: General Detail & Sections		
scale		1:25/10@A1 1:50/20@A3
drw	DJR	chk DJR
drawing no.	rev.	date
A214004.103	A	23.01.14

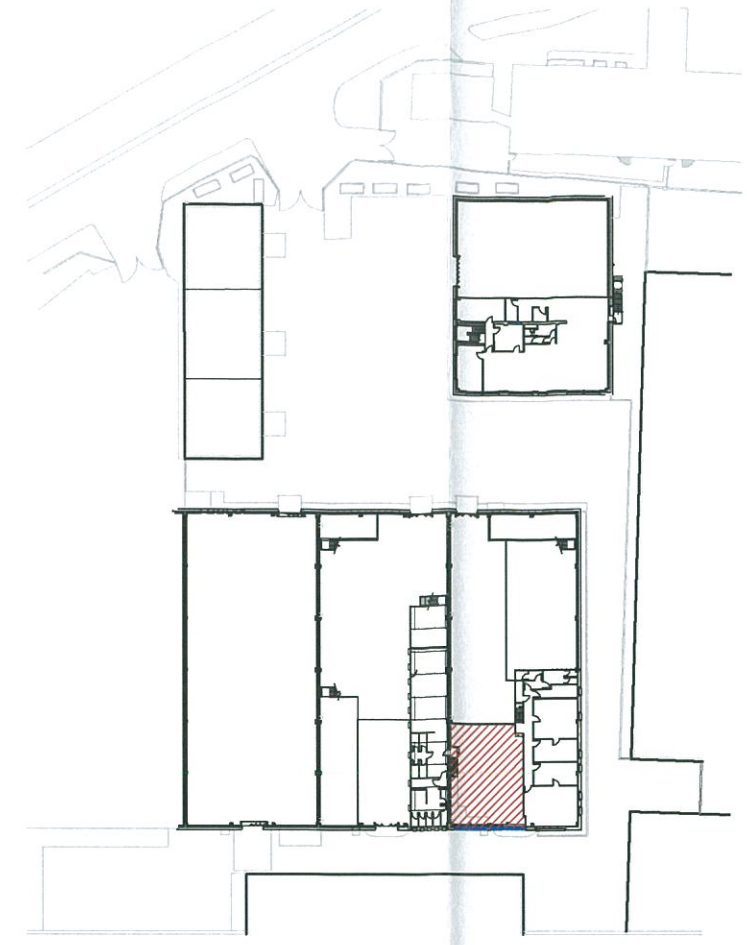
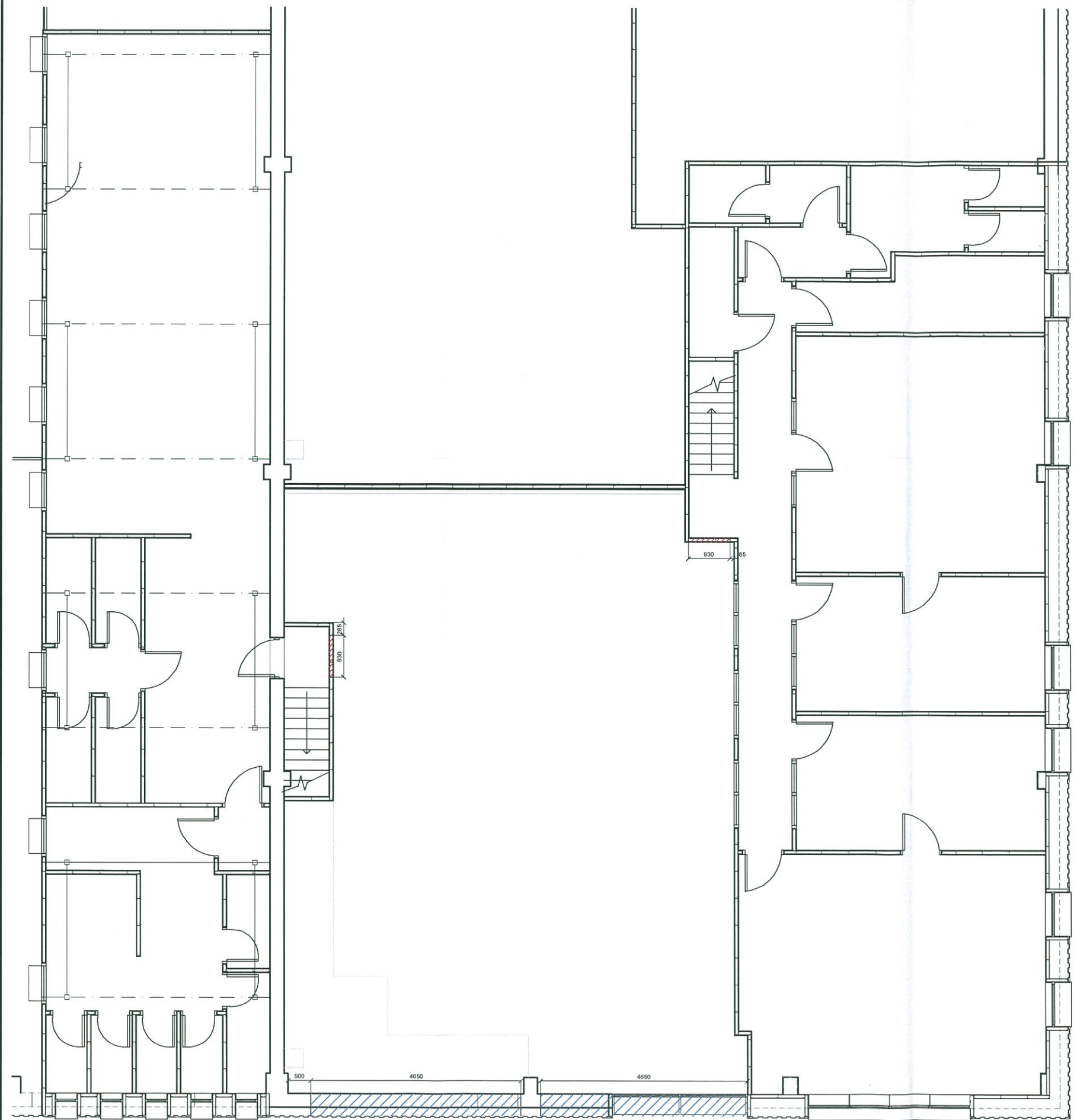


Location Plan
scale 1:500

notes
 This drawing is the copyright and property of AKS Architects and Engineers Ltd. It must not be copied or published without written consent.
 Do not scale from this drawing.
 All dimensions to be checked on site.

TOWN PLANNING AND
 BUILDING CONTROL
 31 JAN 2014
RECEIVED

A 01.14 issued to planning		
rev	date	description
 AKS ARCHITECTS & ENGINEERS P.O. Box 855, Gibraltar		
Tel: (+350) 20073260 Fax: (+350) 20074739 Email: mail@aks.gi		
project		
Internal Alterations to Housing Works Agency		
title		
Architectural GA: First Floor Layout - setting out		
scale		
1:50@A1	1:100@A3	
drw	chk	
DJR	DJR	
drawing no.	rev.	date
A214004.104	A	23.01.14



Location Plan
scale 1:500

notes
 This drawing is the copyright and property of AKS Architects and Engineers Ltd. It must not be copied or published without written consent.
 Do not scale from this drawing.
 All dimensions to be checked on site.

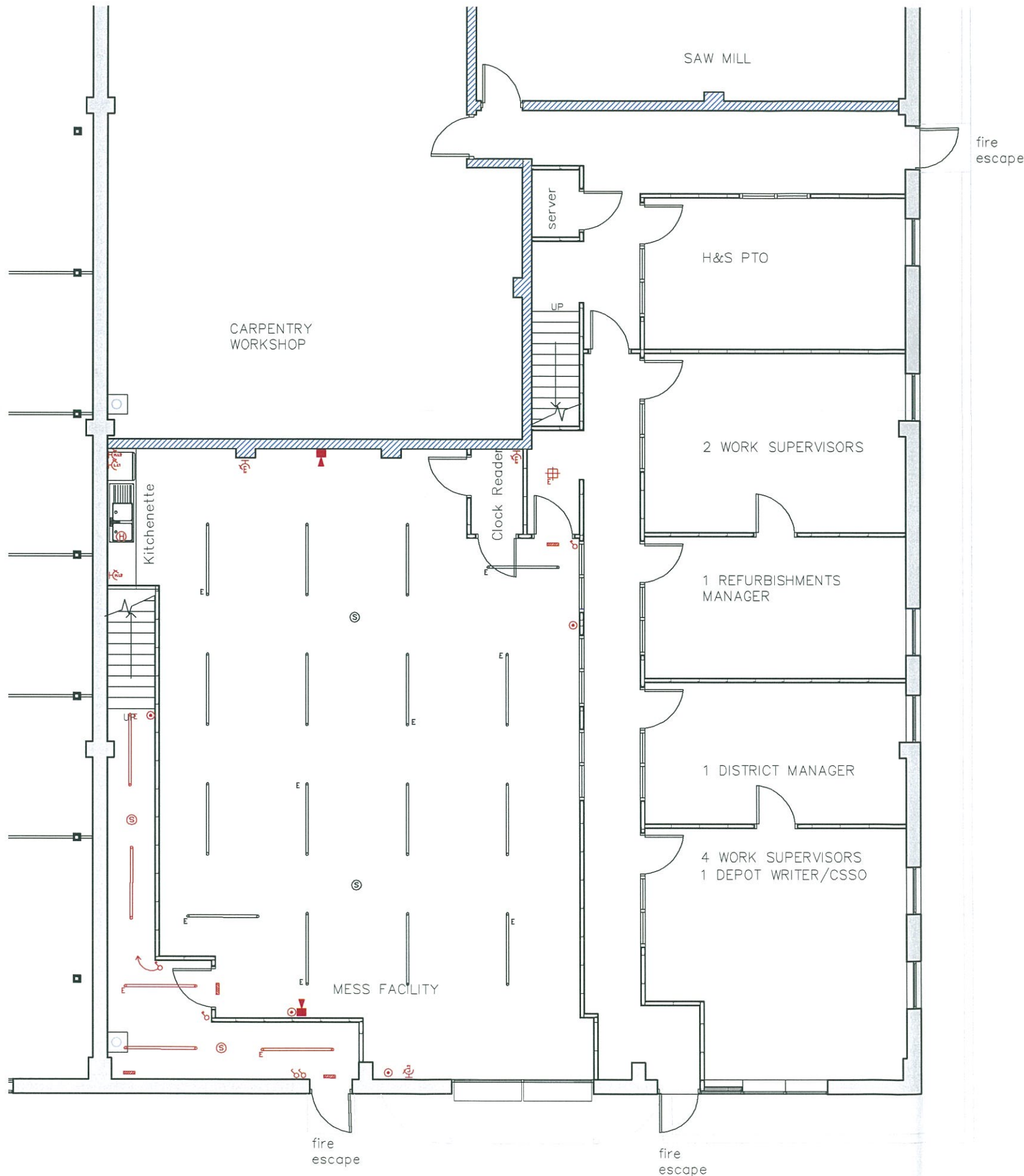
- Legend:
- New opening 2100mm high from FFL.
 - New window opening - W1
 - FFL to window Cill 1300mm
 - FFL to window head 2400mm

**TOWN PLANNING AND
BUILDING CONTROL**

31 JAN 2014

RECEIVED

A 01.14 issued to planning	
rev	date description
AKS ARCHITECTS & ENGINEERS P.O. Box 855, Gibraltar Tel: (+350) 20073260 Fax: (+350) 20074739 Email: mail@aks.gi	
project	
Internal Alterations to Housing Works Agency	
title	
Demolition GA: First Floor Layout	
scale	
1:50@A1	1:100@A3
drw	chk
DJR	DJR
drawing no.	rev. date
A214004.300	A 23.01.14



Location Plan
scale 1:500

- LEGEND: new electrical components**
- ⊙ smoke detector
 - ⊕ heat detector
 - ⊕_{H.L.2} High level Double socket
 - ⊕_{L.L.2} Low level Double socket
 - ⊕_{TELE} telephone point (450mm min)
 - ⊕_{ADSL} ADSL (450mm min)
 - ⊕ HPF fluorescent strips, twin model with cover plate (2x58W)
 - E. Maintained Emergency Lighting Pack
 - ⊕ HPF fluorescent strips, twin model with cover plate (2x58W)
 - ▨ emergency maintained light with exit sign, ceiling and wall mounted unit
 - ⊕ switch 1gang
 - ⊕ switch 2gang
 - ⊕ Electronic Sounder/Xenon Beacon
 - ⊕ Break Glass Call Point
 - AHU air-Handling reverse cycle Units, location to be confirmed by specialist
 - Con Condenser units to new premises, location to be confirmed by specialist

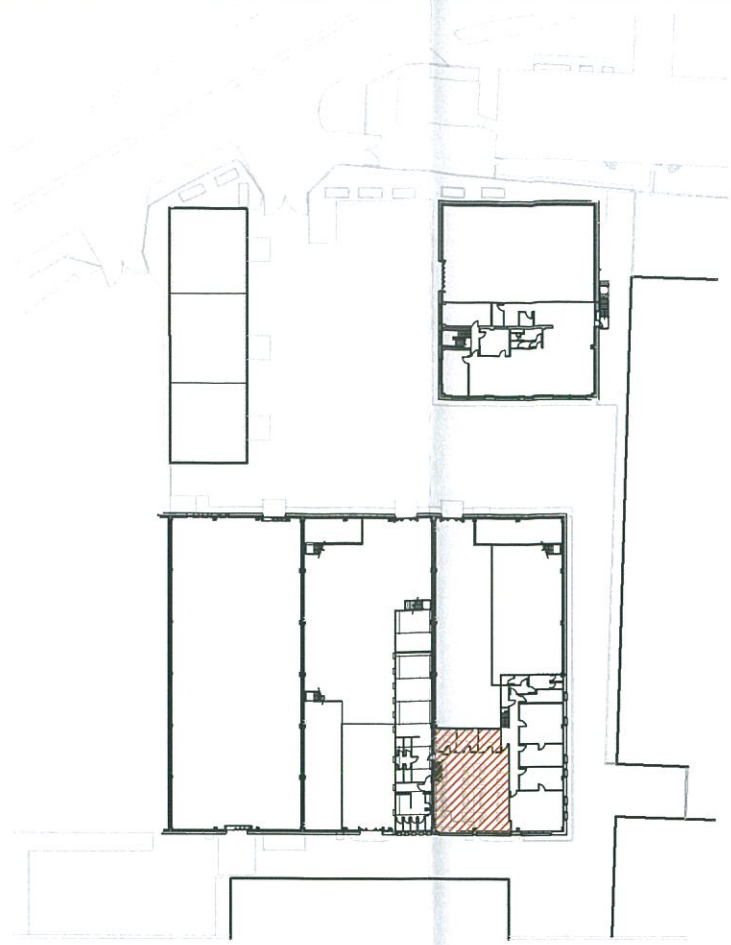
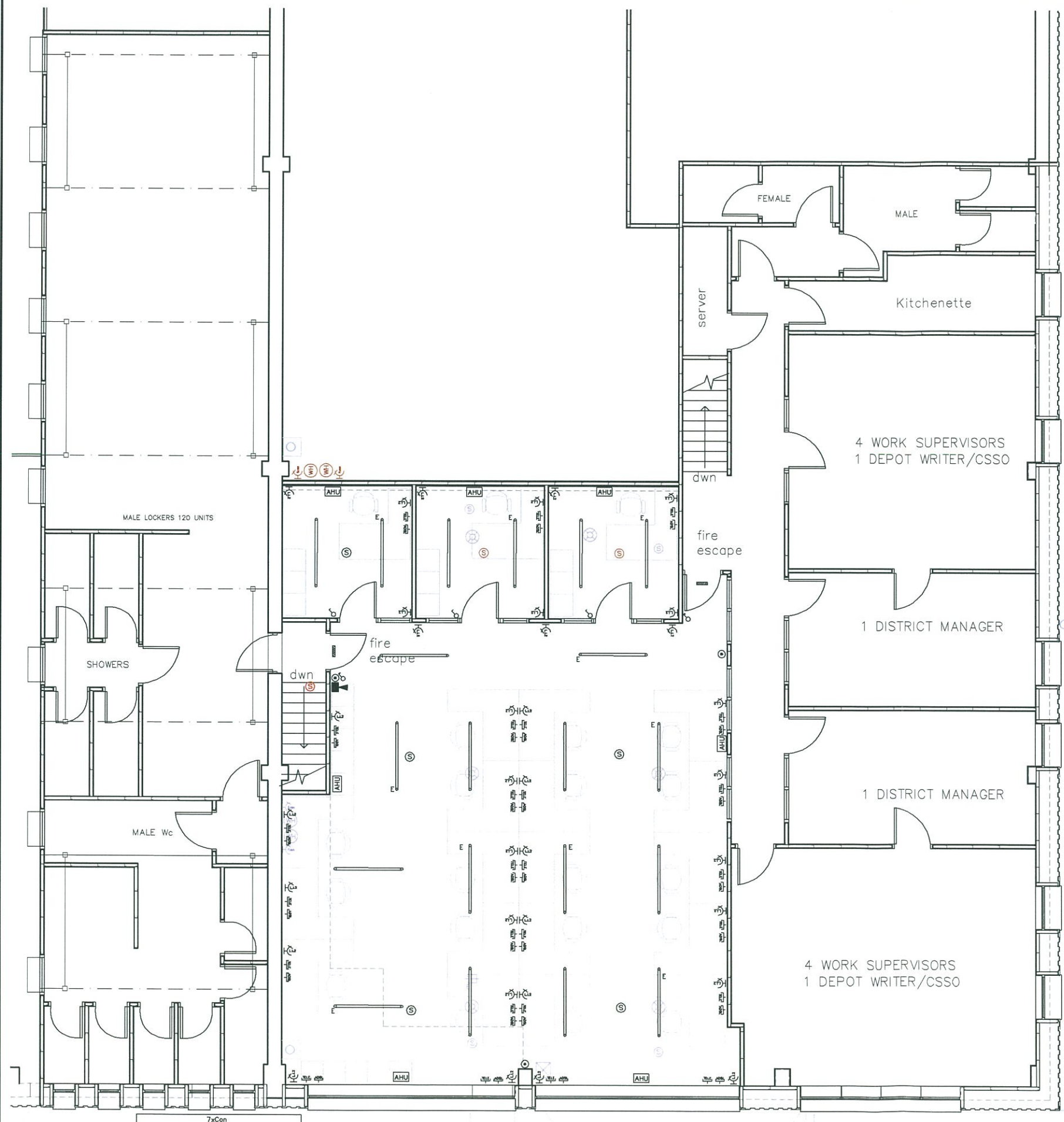
notes
This drawing is the copyright and property of AKS Architects and Engineers Ltd. It must not be copied or published without written consent. Do not scale from this drawing.

All dimensions to be checked on site.

- LEGEND: extg. electrical components to remain**
- ⊕ switch 1gang
 - ⊕ switch 2gang
 - ⊕ smoke detector
 - ⊕ fluorescent lighting strips
 - ⊕ Break Glass Call Point
 - ⊕_{L.L.2} Low level Double socket
 - ⊕_{L.L.1} Low level single socket
 - ⊕ External flood light
 - ⊕ ceiling mounted drum light E. Maintained Emergency Lighting Pack
- LEGEND: extg. electrical components relocated**
- ⊕ Hot water tank ceiling void
 - ⊕ fuse socket
 - ⊕ smoke detector
- LEGEND: extg. electrical components removed or disposed off**
- ⊕ Hot water tank ceiling void
 - ⊕ fuse socket
 - ⊕ External flood light
 - ⊕ smoke detector
 - ⊕ ceiling mounted drum light E. Maintained Emergency Lighting Pack
 - ⊕ wall mounted electric heater to be relocated.

TOWN PLANNING AND BUILDING CONTROL
31 JAN 2014
RECEIVED

A 01.14 preliminary		
rev	date	description
AKS ARCHITECTS & ENGINEERS P.O. Box 855, Gibraltar Tel: (+350) 20073260 Fax: (+350) 20074739 Email: mail@aks.gi		
project Internal Alterations to Housing Works Agency		
title Electrical GA: Ground Floor Layout		
scale 1:50@A1		1:100@A3
drw DJR	chk DJR	
drawing no. A214004.700	rev. A	date 23.01.14



Location Plan
scale 1:500

notes
This drawing is the copyright and property of AKS Architects and Engineers Ltd. It must not be copied or published without written consent. Do not scale from this drawing.

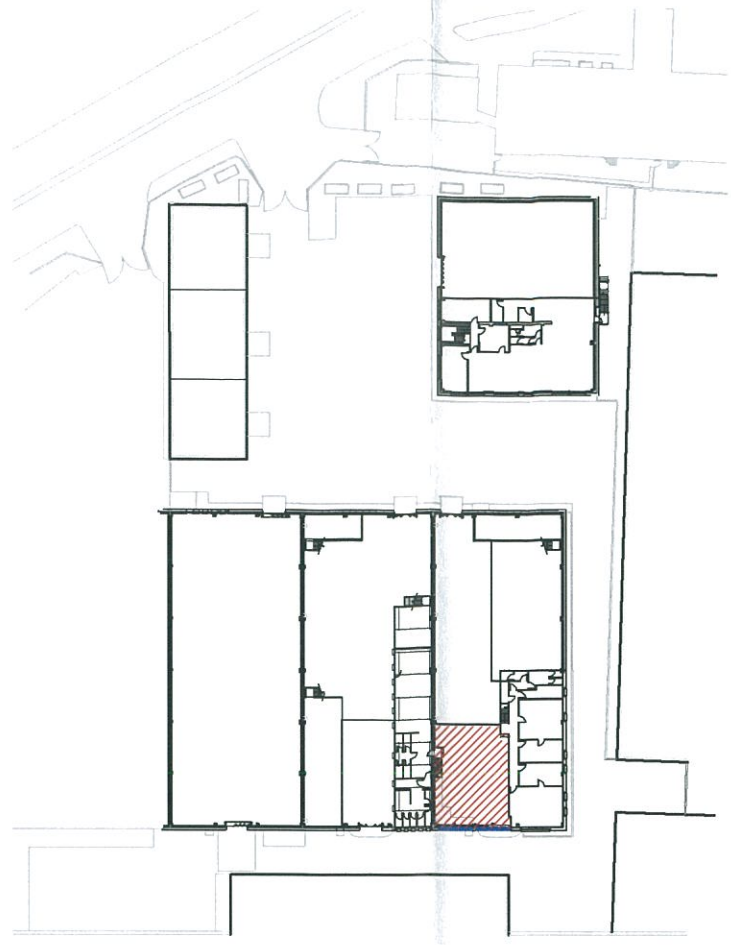
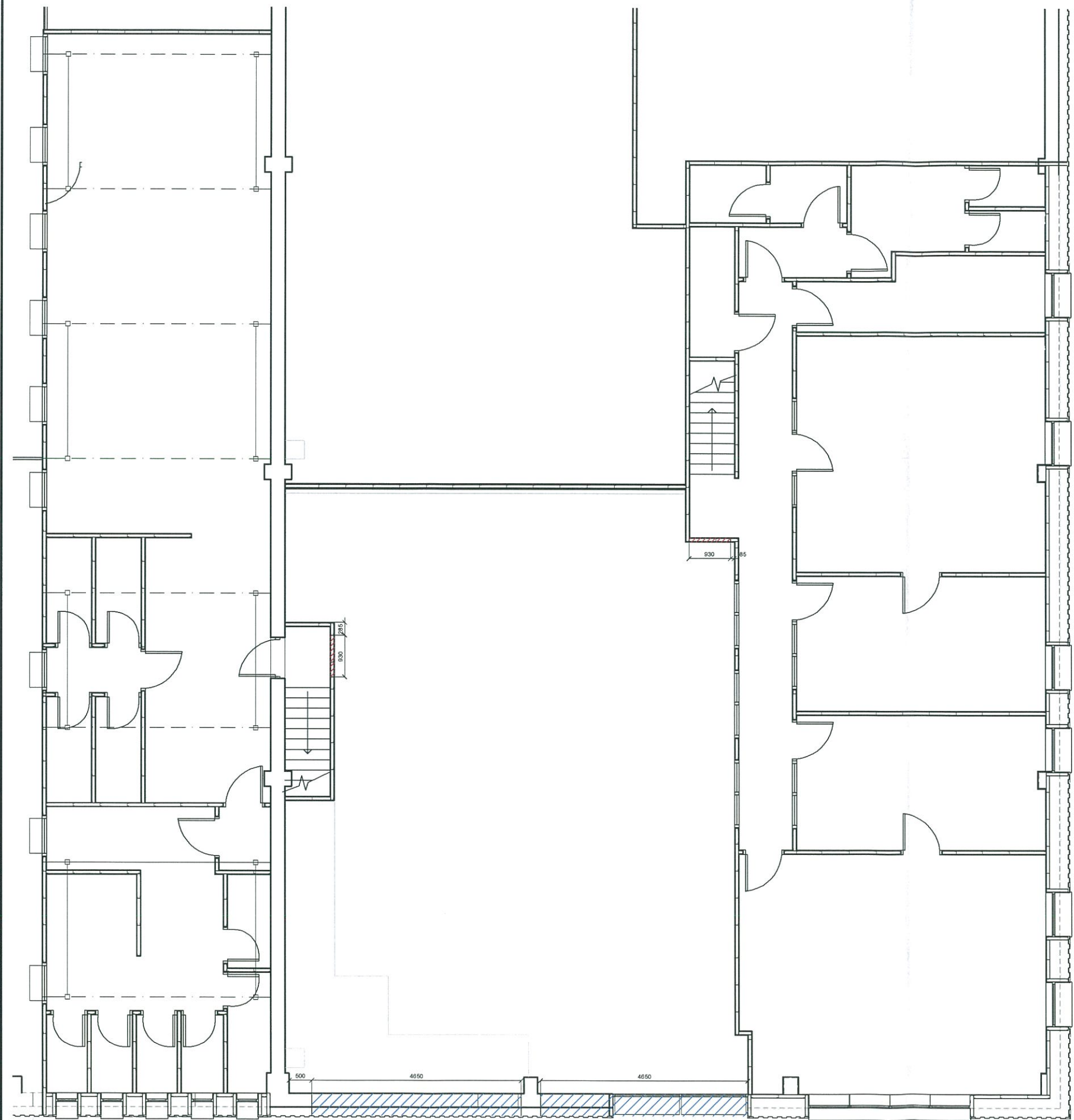
All dimensions to be checked on site.

- LEGEND: extg. electrical components to remain
- switch 1gang
 - switch 2gang
 - smoke detector
 - fluorescent lighting strips
 - Break Glass Call Point
 - Low level Double socket
 - Low level single socket
 - External flood light
 - ceiling mounted drum light
 - E. Maintained Emergency Lighting Pack
- LEGEND: extg. electrical components relocated
- Hot water tank ceiling void
 - fuse socket
 - smoke detector
- LEGEND: extg. electrical components removed or disposed off
- Hot water tank ceiling void
 - fuse socket
 - External flood light
 - smoke detector
 - ceiling mounted drum light
 - E. Maintained Emergency Lighting Pack
 - wall mounted electric heater to be relocated.

- LEGEND: new electrical components
- smoke detector
 - heat detector
 - High level Double socket
 - Low level Double socket
 - telephone point (450mm min)
 - ADSL (450mm min)
 - HPF fluorescent strips, twin model with cover plate (2x5BW)
 - E. Maintained Emergency Lighting Pack
 - HPF fluorescent strips, twin model with cover plate (2x5BW)
 - emergency maintained light with exit sign, ceiling and wall mounted unit
 - switch 1gang
 - switch 2gang
 - Electronic Sounder/Xenon Beacon
 - Break Glass Call Point
 - AHU air-Handling reverse cycle Units, location to be confirmed by specialist
 - Con Condensor units to new premises, location to be confirmed by specialist

TOWN PLANNING AND BUILDING CONTROL
31 JAN 2014
RECEIVED

A 01.14 preliminary	
rev	date description
AKS ARCHITECTS & ENGINEERS P.O. Box 855, Gibraltar Tel: (+350) 20073260 Fax: (+350) 20074739 Email: mail@aks.gi	
project Internal Alterations to Housing Works Agency	
title Electrical GA: First Floor Layout	
scale	1:50@A1 1:100@A3
drw	DJR
chk	DJR
drawing no.	rev. date
A214004.701	A 23.01.14



Location Plan
scale 1:500

notes
 This drawing is the copyright and property of AKS Architects and Engineers Ltd. It must not be copied or published without written consent.
 Do not scale from this drawing.
 All dimensions to be checked on site.

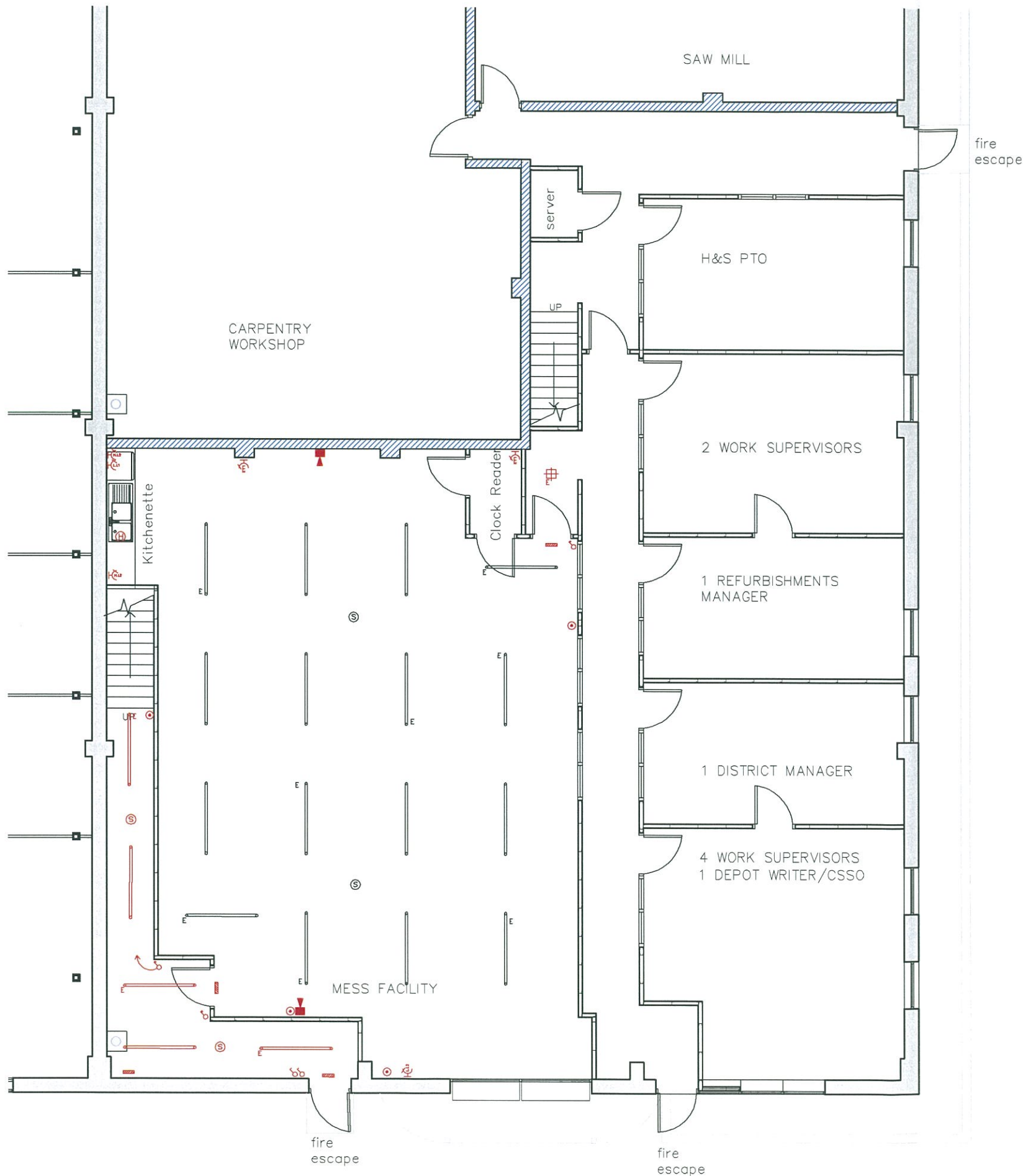
- Legend:
- New opening 2100mm high from FFL
 - New window opening - W1
 - FFL to window Cill 1300mm
 - FFL to window head 2400mm

**TOWN PLANNING AND
BUILDING CONTROL**

31 JAN 2014

RECEIVED

A 01.14 issued to planning		
rev	date	description
AKS ARCHITECTS & ENGINEERS P.O. Box 855, Gibraltar		
Tel: (+350) 20073260 Fax: (+350) 20074739 Email: mail@aks.gi		
project		
Internal Alterations to Housing Works Agency		
title		
Demolition GA: First Floor Layout		
scale		
1:50@A1	1:100@A3	
drw	chk	
DJR	DJR	
drawing no.	rev.	date
A214004.300	A	23.01.14



Location Plan
scale 1:500

- LEGEND: new electrical components**
- Ⓢ smoke detector
 - Ⓜ heat detector
 - H.L.2 High level Double socket
 - L.L.2 Low level Double socket
 - ☎ telephone point (450mm min)
 - ADSL (450mm min)
 - HPF fluorescent strips, twin model with cover plate (2x58W)
 - E. Maintained Emergency Lighting Pack
 - HPF fluorescent strips, twin model with cover plate (2x58W)
 - emergency maintained light with exit sign, ceiling and wall mounted unit
 - switch 1gang
 - switch 2gang
 - Electronic Sounder/Xenon Beacon
 - Break Glass Call Point
 - AHU air-Handling reverse cycle Units, location to be confirmed by specialist
 - Con Condenser units to new premises, location to be confirmed by specialist

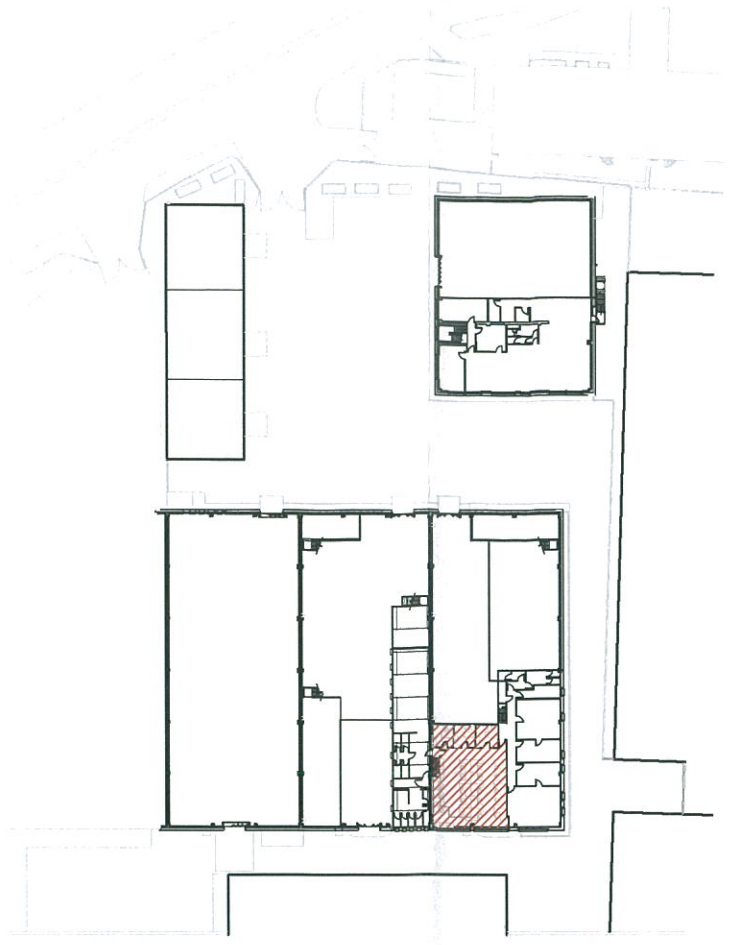
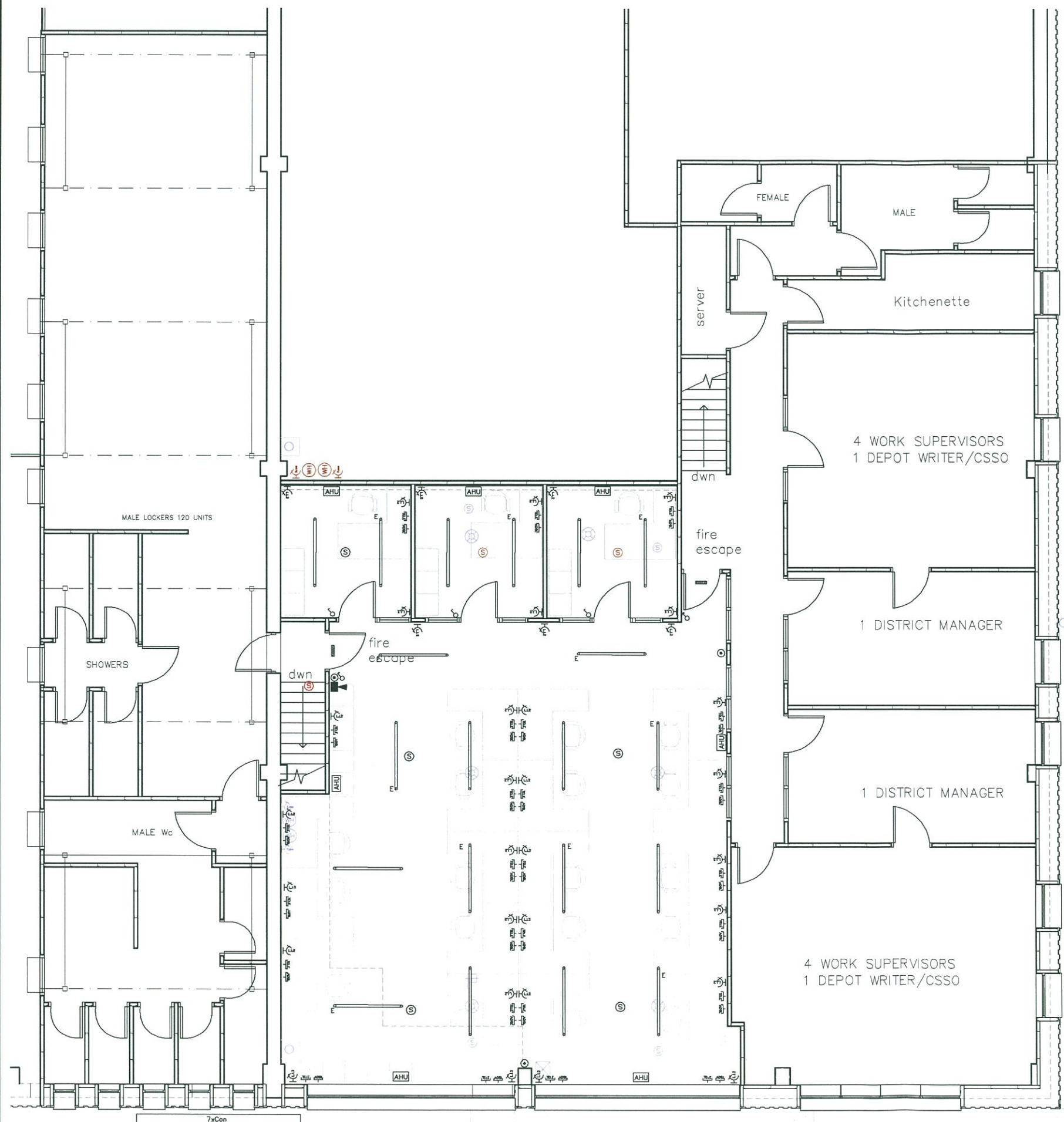
notes
This drawing is the copyright and property of AKS Architects and Engineers Ltd. It must not be copied or published without written consent. Do not scale from this drawing.

All dimensions to be checked on site.

- LEGEND: extg. electrical components to remain**
- switch 1gang
 - switch 2gang
 - Ⓢ smoke detector
 - fluorescent lighting strips
 - Break Glass Call Point
 - L.L.2 Low level Double socket
 - L.L.1 Low level single socket
 - Ex External flood light
 - E ceiling mounted drum light
E. Maintained Emergency Lighting Pack
- LEGEND: extg. electrical components relocated**
- WH Hot water tank
ceiling void
 - fuse fuse socket
 - Ⓢ smoke detector
- LEGEND: extg. electrical components removed or disposed off**
- WH Hot water tank
ceiling void
 - fuse fuse socket
 - External flood light
 - Ⓢ smoke detector
 - E ceiling mounted drum light
E. Maintained Emergency Lighting Pack
 - ⊗ wall mounted electric heater to be relocated.

TOWN PLANNING AND BUILDING CONTROL
31 JAN 2014
RECEIVED

A	01.14	preliminary
rev	date	description
AKS ARCHITECTS & ENGINEERS P.O. Box B55, Gibraltar Tel: (+350) 20073260 Fax: (+350) 20074739 Email: mail@aks.gi		
project Internal Alterations to Housing Works Agency		
title Electrical GA: Ground Floor Layout		
scale 1:50@A1		1:100@A3
drw DJR	chk DJR	
drawing no. A214004.700	rev. A	date 23.01.14



Location Plan
scale 1:500

- LEGEND: new electrical components**
- ⊙ smoke detector
 - ⊙ heat detector
 - H.L2 High level Double socket
 - L.L2 Low level Double socket
 - TELE telephone point (450mm min)
 - ADS ADSL (450mm min)
 - E HPF fluorescent strips, twin model with cover plate (2x58W)
 - E Maintained Emergency Lighting Pack
 - HPF fluorescent strips, twin model with cover plate (2x58W)
 - emergency maintained light with exit sign, ceiling and wall mounted unit
 - switch 1gang
 - switch 2gang
 - Electronic Sounder/Xenon Beacon
 - Break Glass Call Point
 - AHU air-Handling reverse cycle Units, location to be confirmed by specialist
 - Con Condenser units to new premises, location to be confirmed by specialist

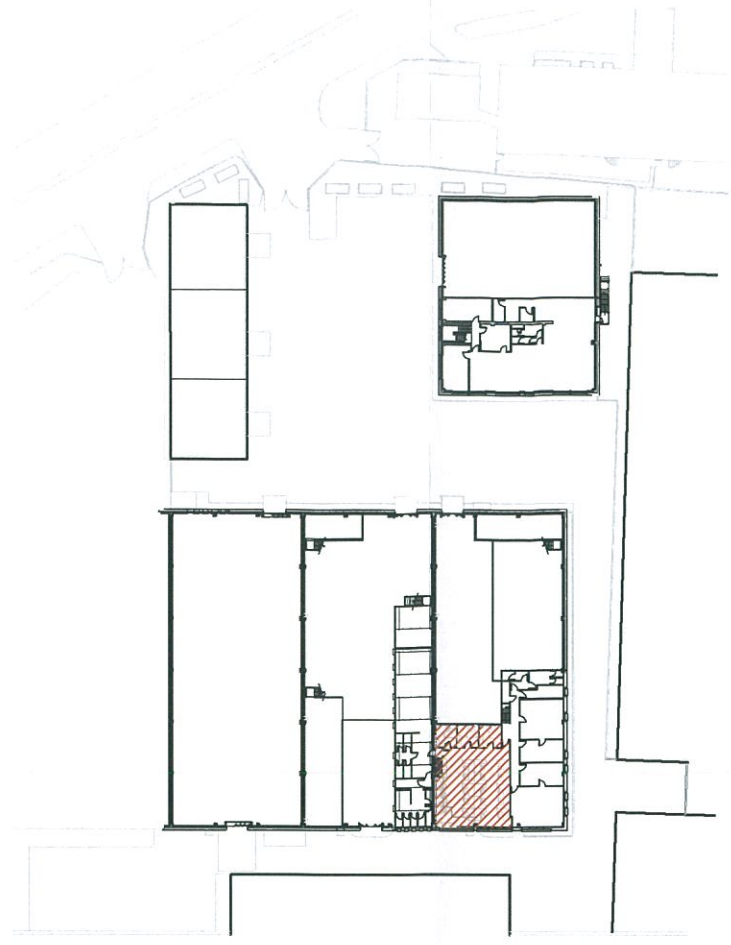
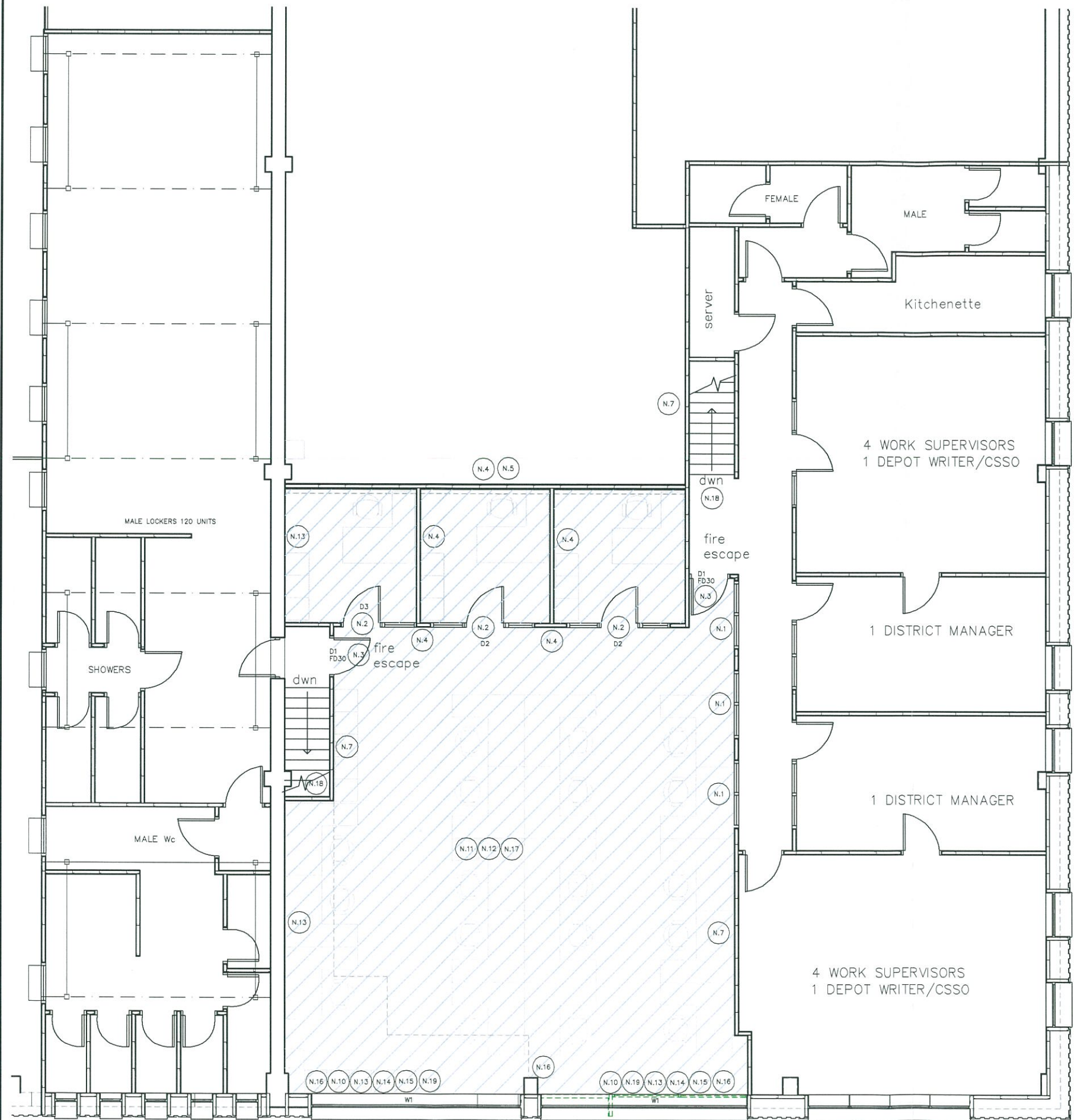
notes
This drawing is the copyright and property of AKS Architects and Engineers Ltd. It must not be copied or published without written consent.
Do not scale from this drawing.

All dimensions to be checked on site.

- LEGEND: extg. electrical components to remain**
- switch 1gang
 - switch 2gang
 - smoke detector
 - fluorescent lighting strips
 - Break Glass Call Point
 - Low level Double socket
 - Low level single socket
 - External flood light
 - ceiling mounted drum light
 - E. Maintained Emergency Lighting Pack
- LEGEND: extg. electrical components relocated**
- Hot water tank ceiling void
 - fuse socket
 - smoke detector
- LEGEND: extg. electrical components removed or disposed off**
- Hot water tank ceiling void
 - fuse socket
 - External flood light
 - smoke detector
 - ceiling mounted drum light
 - E. Maintained Emergency Lighting Pack
 - wall mounted electric heater to be relocated.

TOWN PLANNING AND BUILDING CONTROL
31 JAN 2014
RECEIVED

A	01.14 preliminary	
rev	date	description
AKS ARCHITECTS & ENGINEERS P.O. Box 855, Gibraltar Tel: (+350) 20073260 Fax: (+350) 20074739 Email: mail@aks.gi		
project		
Internal Alterations to Housing Works Agency		
title		
Electrical GA: First Floor Layout		
scale		
1:50@A1		1:100@A3
drw	DJR	chk DJR
drawing no.	rev.	date
A214004.701	A	23.01.14



Location Plan
scale 1:500

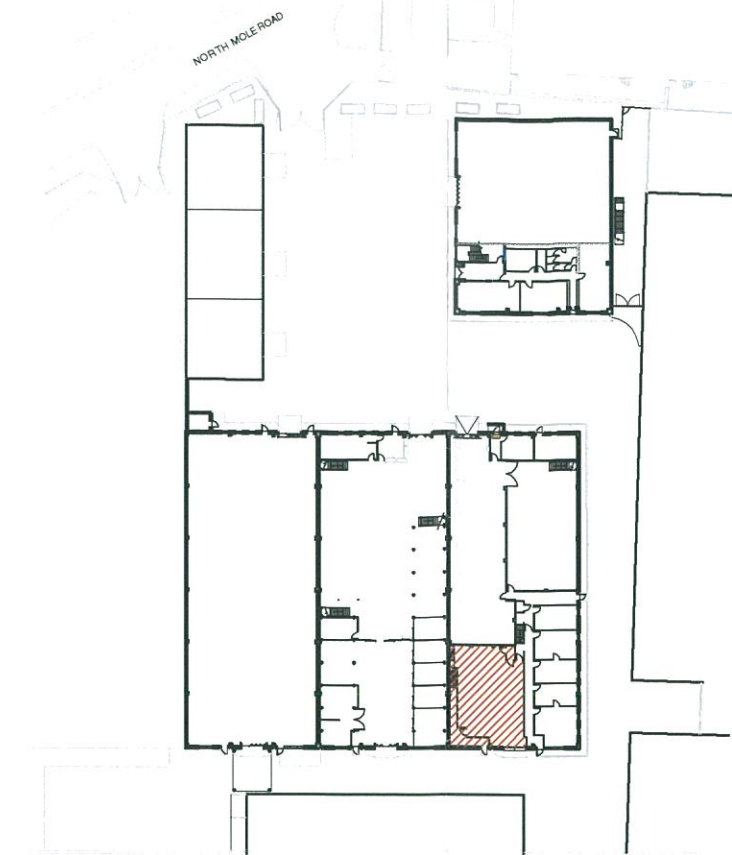
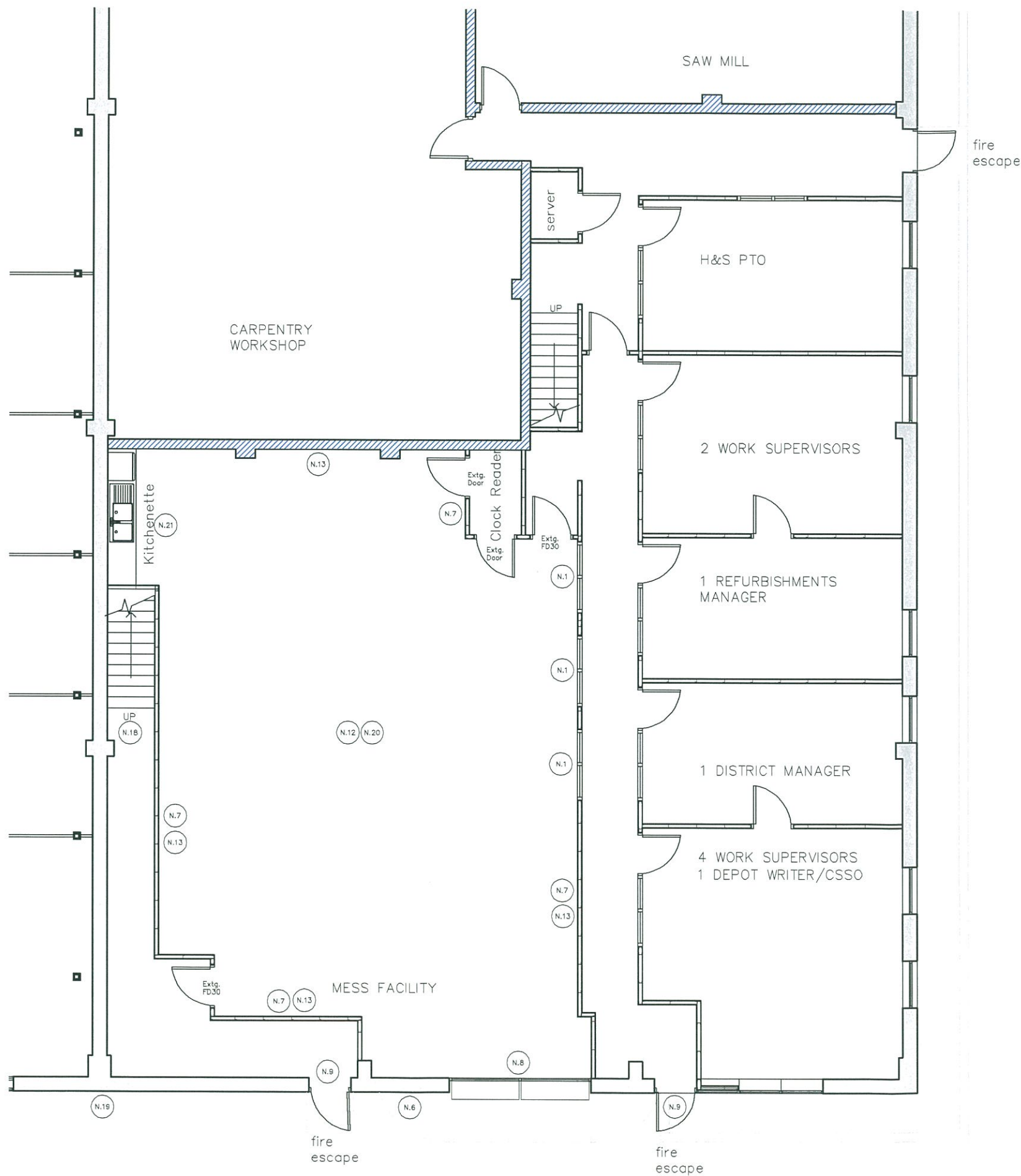
- notes
- This drawing is the copyright and property of AKS Architects and Engineers Ltd. It must not be copied or published without written consent. Do not scale from this drawing.
- All dimensions to be checked on site.
- LEGEND:
- Existing internal fixed window frame with fixed Georgian wire or fire resistant glass panels to remain.
 - all internal doors to be 2100 high from FFL if noted otherwise.
 - all internal doors to be 2100mm high from FFL and are to incorporate the following:
 - FD30
 - self closer
 - wire mesh glazing panel
 - fire rated (800°) steel hinges, min 3
 - intumescent strips, if required
 - all internal walls to METSEC detailing, 12.5mm plasterboard both faces with mineral wool insulation internally.
 - All main METSEC fire resistance walls to achieve a 1 hour fire rating lining board.
 - Extg. masonry wall to remain.
- Existing Metsec wall / structure to remain.
 - Existing rear window to be altered to provide new fire escape door within frame.
 - Existing rear fire escape door to remain.
 - Proposed high level windows top hung inward opening, colour to match existing, clear glazing.
 - New floor with METSEC steel joists, lined to the underside with 1 hour fire rated board, and 19mm plywood decking over prior to laying floor finish.
 - Provide new ceiling cladding to underside of existing and proposed steel frame. All structural members to be lined with 1 hour fire rated cladding.
 - Existing internal walls to remain, make good if necessary and apply 2 coats of emulsion paint.
 - Existing external steel sheet cladding to receive minor alterations due to new window insertions. contractor to cut opening within existing steel members. glazing to be manufactured after completion of opening.
 - steel portal frame to remain, fire rated cladding to be checked for defects and repaired where necessary.
 - Provide new internal METSEC wall partition to outer skin of external cladding, lined with 1 hour fire rated boarding.
 - For floor finishes, please provide carpet tiles to match existing, refer to highlighted/hatched area as per colour below.
 - Existing fire escape steel staircase to remain and new fire rated door introduced.
- All glazing to be 1100mm high from FFL with clear glazing, aluminium frame inward opening casement window with integrated fire escape outward opening door. External single door, with vision panel, aluminium frame, weather resistant. Colour to match existing.
 - Existing vinyl flooring to remain and made good, once new LGSF structure is installed.
 - Existing kitchenette to remain.

TOWN PLANNING AND
BUILDING CONTROL

31 JAN 2014

RECEIVED

A	D1.14	issued to planning
rev	date	description
 AKS ARCHITECTS & ENGINEERS P.O. Box 855, Gibraltar		
Tel: (+350) 20073260 Fax: (+350) 20074739		
Email: mail@aks.gi		
project		
Internal Alterations to Housing Works Agency		
title		
Architectural GA: First Floor Layout		
scale		
1:50@A1	1:100@A3	
drw	DJR	chk DJR
drawing no.	rev.	date
A214004.101	A	23.01.14



Location Plan
scale 1:500

- notes
- This drawing is the copyright and property of AKS Architects and Engineers Ltd. It must not be copied or published without written consent. Do not scale from this drawing.
- All dimensions to be checked on site.
- LEGEND:
- Existing internal fixed window frame with fixed Georgian wire or fire resistant glass panels to remain.
 - all internal doors to be 2100 high from FFL if noted otherwise.
 - all internal doors to be 2100mm high from FFL and are to incorporate the following:
FD30
self closer
wire mesh glazing panel
fire rated (800°) steel hinges, min 3 intumescent strips, if required
 - all internal walls to METSEC detailing, 12.5mm plasterboard both faces with mineral wool insulation internally.
 - All main METSEC fire resistance walls to achieve a 1 hour fire rating lining board.
 - Extg. masonry wall to remain.
 - Existing Metsec wall / structure to remain.
 - Existing rear window to be altered to provide new fire escape door within frame.
 - Existing rear fire escape door to remain.
 - Proposed high level windows top hung inward opening, colour to match existing, clear glazing.
 - New floor with METSEC steel joists, lined to the underside with 1 hour fire rated board, and 19mm plywood decking over prior to laying floor finish.
 - Provide new ceiling cladding to underside of existing and proposed steel frame. All structural members to be lined with 1 hour fire rated cladding.
 - Existing internal walls to remain, make good if necessary and apply 2 coats of emulsion paint.
 - Existing external steel sheet cladding to receive minor alterations due to new window insertions. contractor to cut opening within existing steel members, glazing to be manufactured after completion of opening.
 - steel portal frame to remain, fire rated cladding to be checked for defects and repaired where necessary.
 - Provide new internal METSEC wall partition to outer skin of external cladding, lined with 1 hour fire rated boarding.
 - For floor finishes, please provide carpet tiles to match existing, refer to highlighted/hatched area as per colour below.
 - Existing fire escape steel staircase to remain and new fire rated door introduced.
 - All glazing to be 1100mm high from FFL, with clear glazing, aluminium frame inward opening casement window with integrated fire escape outward opening door. External single door, with vision panel, aluminium frame, weather resistant. Colour to match existing.
 - Existing vinyl flooring to remain and made good, once new LGSF structure is installed.
 - Existing kitchenette to remain.

TOWN PLANNING AND BUILDING CONTROL
31 JAN 2014
RECEIVED

A 01.14 issued to planning		
rev	date	description
AKS ARCHITECTS & ENGINEERS P.O. Box 855, Gibraltar		
Tel: (+350) 20073260 Fax: (+350) 20074739 Email: mail@aks.gi		
project Internal Alterations to Housing Works Agency		
title Architectural GA: Ground Floor Layout		
scale 1:50@A1		1:100@A3
drw DJR	chk DJR	
drawing no. A214004.100	rev. A	date 23.01.14